

# K219 Mobile Printer

- Industrial quality
- Adjustable paper width
- Bluetooth 4.2
- Support Windows / Android / iOS



---

## Label printing

Gap detection and black mark detection allow printing of labels in different sizes

## Printing features

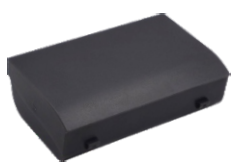
High printing speed for text in various languages and graphics

## Low energy Bluetooth

Supports multiple host connections

## Long operating hours

1500mAh battery and highly optimized power management schemes ensure long operating hours without disruptions



Battery



Adapter



Data cable

# SPECIFICATION

## PRINTER SPECIFICATIONS

Printer Mode	Direct Thermal
Maximum Print Width	2"/48mm
Maximum Print Speed	70mm per second
Resolution	203dpi(8 dots/mm)
Print Life	150km(25%Print density or the following)/Each point: 1.5million pulses
Power	11.1Wh(1500mAh)/7.4V Rechargeable lithium polymer battery
Character Sets	English, Russian, Arabic, Chinese, Japanese, Korean and other languages, characters, graphics curve 1D bar-code: UPC-A, UPC-E, CODE39, EAN-13, EAN-8, CODEBAR, CODE128, CODE93, ITF 2D bar-code: QR Code, PDF417, DATAMATRIX
Programming Languages	ESC/POS CPCL(Compatibility)
Support System	Windows CE/Mobile Support Microsoft Standard SDK, API interface invocation(CE5.0 or above, Mobile5.0 or above) Android Support Google Standard SDK, API interface invocation(2.0 or above) IOS Support IOS System & Supply IOS SDK

## MEDIA SPECIFICATIONS

Media Width	20mm-58mm
Maximum Media Roll Size	43mm
Media Thickness	1.97~7.09mil
Media Type	Labels, Thermal paper

## COMMUNICATION

Wired	Type	Type-C
Bluetooth	Bluetooth 2.1+4.2(BLE)	

## PHYSICAL CHARACTERISTICS

Size(L*W*H)	105mm*90mm*54mm
Weight	180g(with battery)

## OTHERS

Charging Time	~2.5h
Stand-by Time	100-120h
Prompt	Paper out prompt, Battery low prompt, Cover/opened prompt, Charging completed prompt, Printing status
Display	OLED screen

## ENVIRONMENT

### Operating Temperature

Operating Temperature	Min	Max
	41°F(5℃)	104°F(40℃)
Operating Humidity(Relative)	20%	85%

### Storage Temperature

Storage Temperature	Min	Max
	-4°F(-20℃)	158°F(70℃)
Storage Temperature (Relative)	5%	95%